

Spare Parts List for

Bishamon

Hydraulic Stackers

Manually Operated Models (650 kg. ~ 1000 kg.)

Model ST65•STL65•ST65H•STL65H

Model ST80•ST80H•ST80-WW•ST80H-WW

Model ST100•ST100H•ST100-WN•ST100H-WN

Note : For the units produced after July 2000

(No Pricing Shown)



ST80WW

Contents

Hydraulic Stacker

Model ST65·STL65·ST65H·STL65H

Model ST80·ST80H·ST80-WW·ST80H-WN

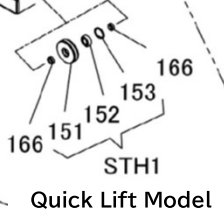
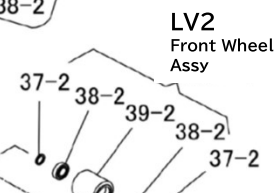
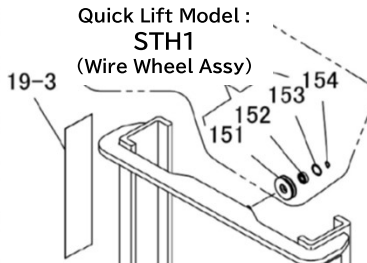
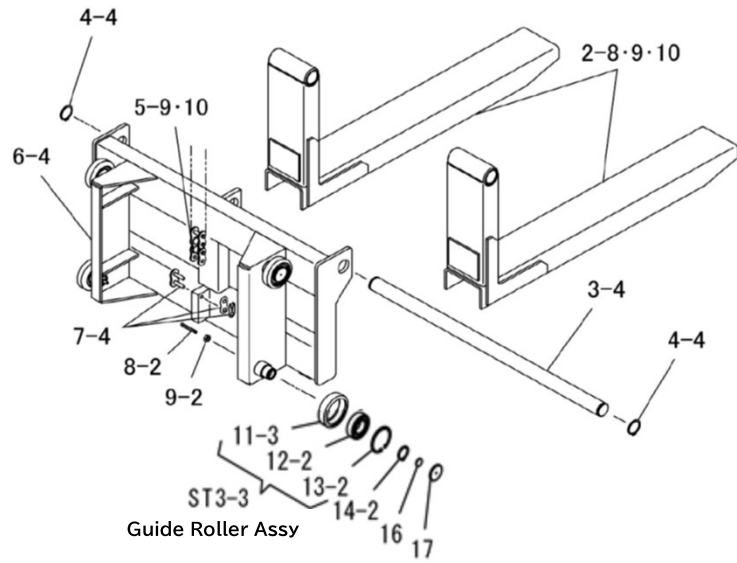
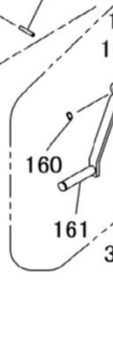
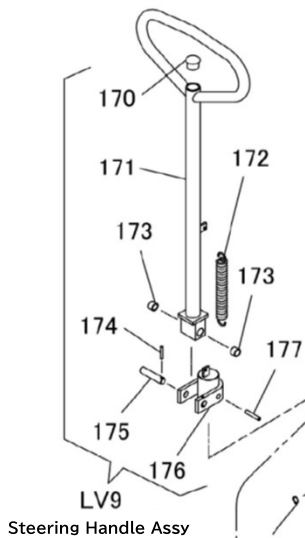
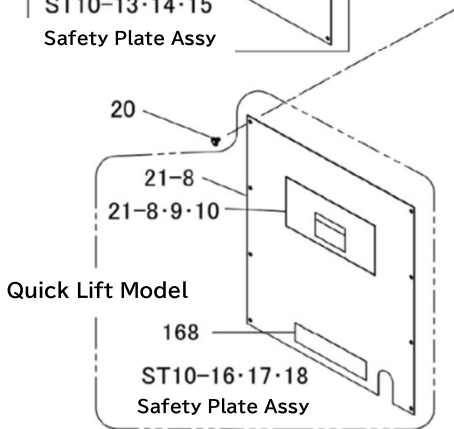
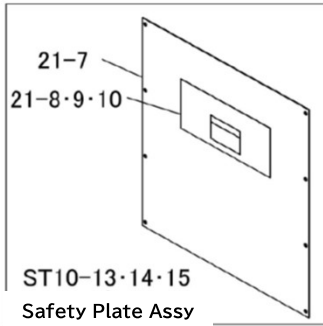
Model ST100·ST100H·ST100-WN·ST100H-WN

	Page		
1) Frame	2	~	5
2) Cylinder	6	~	9

Manual Model (650kg·800kg·1000kg)

Frame

650kg...	ST65·STL65 ST65H·STL65H
800kg...	ST80·ST80H ST80WW·ST80HWW
1000kg...	ST100·ST100H ST100WN·ST100HWN



Frame

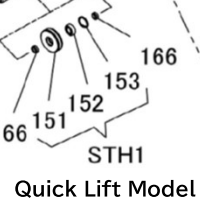
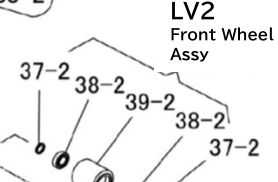
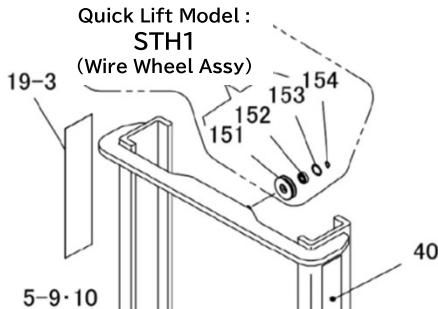
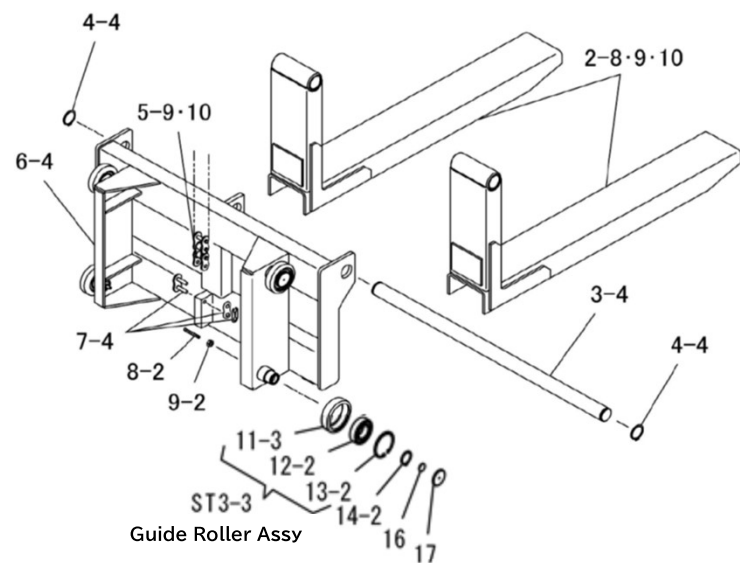
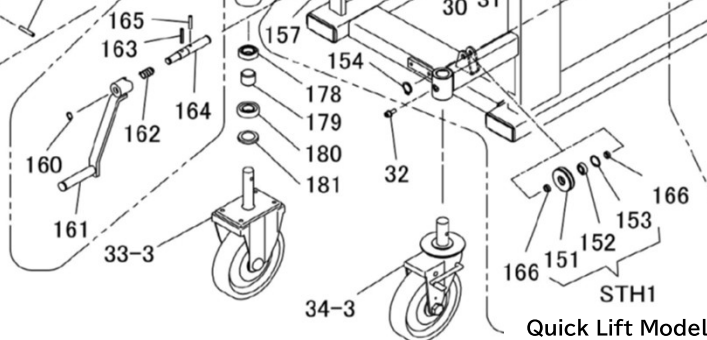
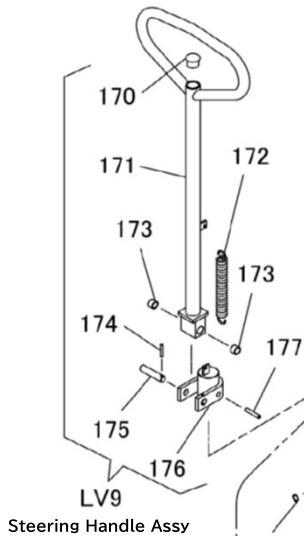
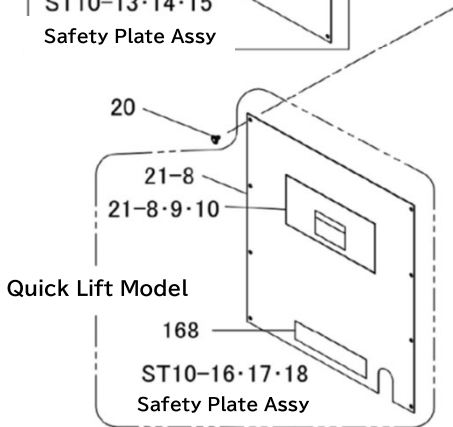
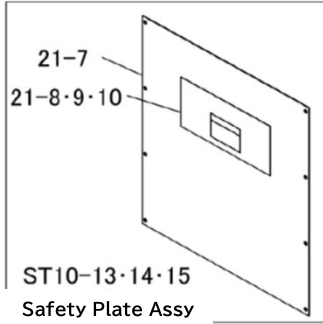
Manual Model (650kg·800kg·1000kg.)

Ill. No.	Parts No.	Parts Name	Standard	Note & Change Date Info.	Qty/Unit			Price/ea.
					650kg	800kg	1000kg	
Quick lift Model shows * marking in front of Qty/Unit								
LV2	02585080	Front Wheel Assy	(37-2X2 · 38-2X2 · 39-2)	Old and New Compatible	2	2	2	
ST3-3	76009600	Guide Roller Assy	(11-3 · 12-2 · 13-2)		4	4	4	
ST10-13	76009530	Safety Plate Assy	(21-7 · 22-8)		1			
ST10-14	76009550	Safety Plate Assy	(21-7 · 22-9)			1		
ST10-15	76009630	Safety Plate Assy	(21-7 · 22-10)				1	
ST10-16	76009540	Safety Plate Assy	(21-8 · 22-8 · 168)		*1			
ST10-17	76009560	Safety Plate Assy	(21-8 · 22-9 · 168)			*1		
ST10-18	76009710	Safety Plate Assy	(21-8 · 22-10 · 168)				*1	
LV9	76005201	Steering Handle Assy	(170 · 171 · 173X2 · 174-176)		1	1	1	
STH1	76009420	Wire Wheel Assy	(151-153)		2	2	2	
ST36	76009570	Fixed Caster Assy	(33-3 · 178~181)		1	1	1	
2-8	00185600	Fork		Color - Gray	2			
2-9	00187800	Fork		Color - Gray		2		
2-10	02608260	Fork		Color - Gray			2	
3-4	12608666	Fork Support Shaft			1	1	1	
4-4	80845022	Snap Ring	RR035		2	2	2	
5-9	80833541	Roller Chain	RS80-41L with Joint Link	STL65 · STL65H	1			
5-10	80833553	Roller Chain	RS80-53L with Joint Link			1	1	
6-4	02608213	Carriage			1	1	1	
7-4	80839343	Joint Link	RS80		2	2	2	
8-2	90960650	Hex Socket Head Cap Screw	HSS0650		4	4	4	
9-2	90930106	Hex Nut	HN06SE		4	4	4	
11-3	12603600	Guide Roller			4	4	4	
12-2	81046206	Bearing	6206ZZ		4	4	4	
13-2	80846036	Snap Ring	RR162		4	4	4	
14-2	80845019	Snap Ring	RR030		4	4	4	
16	12603681	Shoe Collar			4	4	4	
17	10593980	Side Shoe			4	4	4	
19-3	51311024	Bishamon Label			1	1	1	
20	80821824	Scrivet (3820)			8	8	8	
21-7	52608133	Safety Plate			1	1	1	
21-8	11132720	Safety Plate			*1	*1	*1	
22-8	11135920	Capacity Label	650kg		1			
22-9	11137540	Capacity Label	800kg			1		
22-10	11131840	Capacity Label	1000kg				1	
23	11128700	Caution Label			1	1	1	
24	90980622	Roll Pin	SRP0622		1	1	1	
25	12003943	Control Lever			1	1	1	
26	90980514	Roll Pin	SRP0514		1	1	1	
27	11128800	Control Cable Assy			1	1	1	
28-4	N/A	Frame (Not available because Frame is structural parts)			1	1	1	N/A
29-4	80821858	Rectangular Cap	108-21 452		2	2	2	
30	90940408	Round Head Small Screw	MSR0408SE		1	1	1	
31	80825504	Nylon Clamp	NK-4N		1	1	1	
32	90760820	Hex Socket Head Cap Bolt	HSBS0820		1	1	1	
33-3	85000851	Fixed Caster	200UWKS	Old and New Compatible	1	1	1	
34-3	85000862	Flexible Caster with Brake	200UWJSB	Old and New Compatible	1	1	1	
37-2	12604680	Pulley Shaft Collar	After Apr. 2004	Old and New Compatible	4	4	4	
38-2	81046004	Bearing	6004ZZ	Old and New Compatible	4 or *8			
39-2	N/A	Front Wheel (V70X73)		Replace with LV2 (Assy)	2	2	2	N/A
40	52603420	Product Name Label			1	1	1	

Manual Model (650kg·800kg·1000kg)

Frame

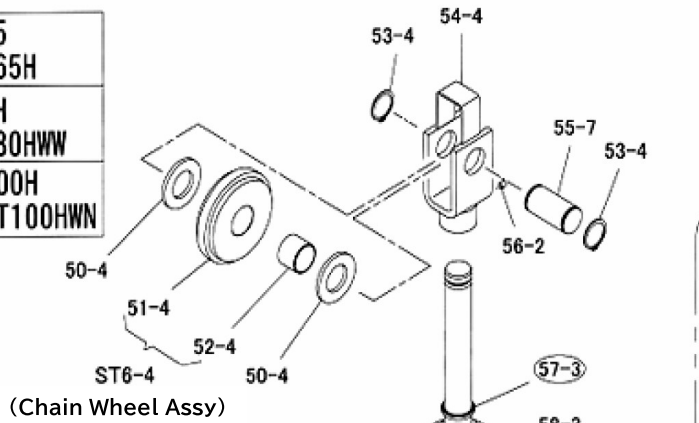
650kg...	ST65·STL65 ST65H·STL65H
800kg...	ST80·ST80H ST80WW·ST80HWW
1000kg...	ST100·ST100H ST100WN·ST100HWN



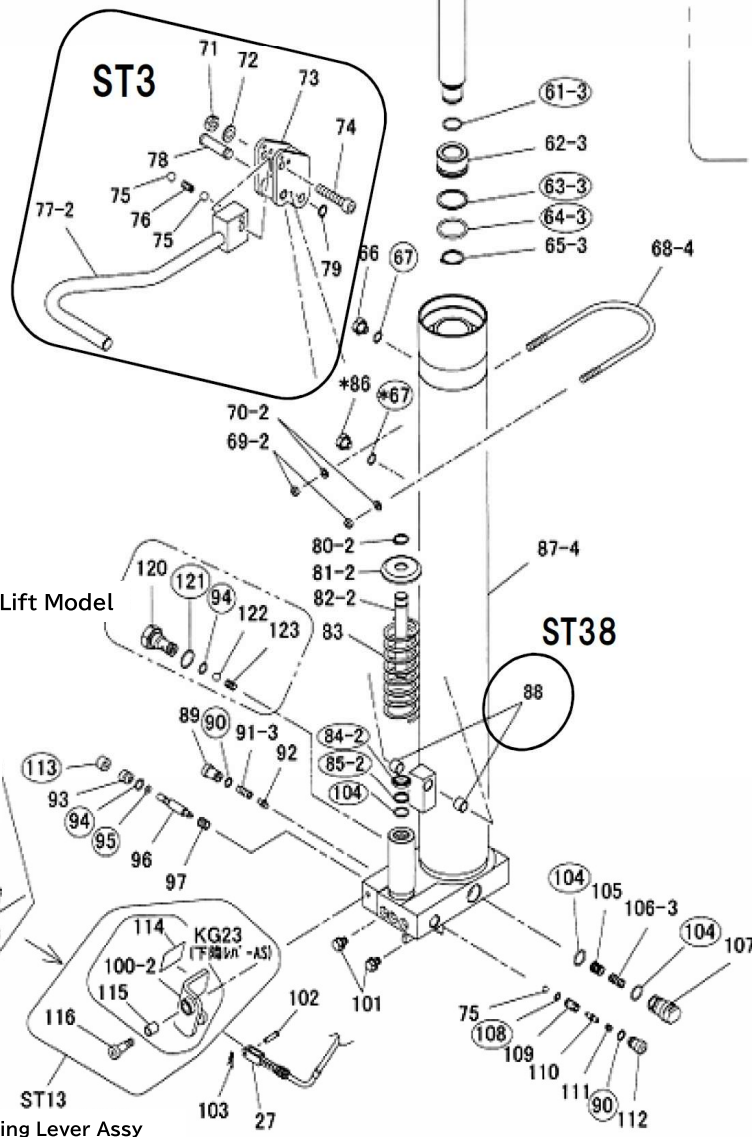
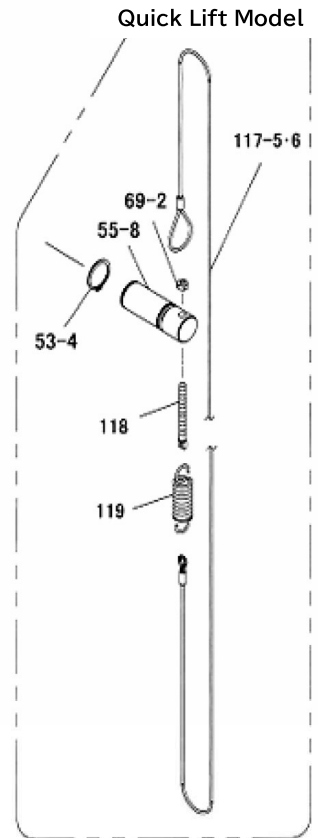
Manual Model (650kg·800kg·1000kg)

Cylinder

650kg...	ST65·STL65 ST65H·STL65H
800kg...	ST80·ST80H ST80WW·ST80HWW
1000kg...	ST100·ST100H ST100WN·ST100HWN



○ Marking Parts - LV8-1·2 Cylinder Seal Kit



Cylinder

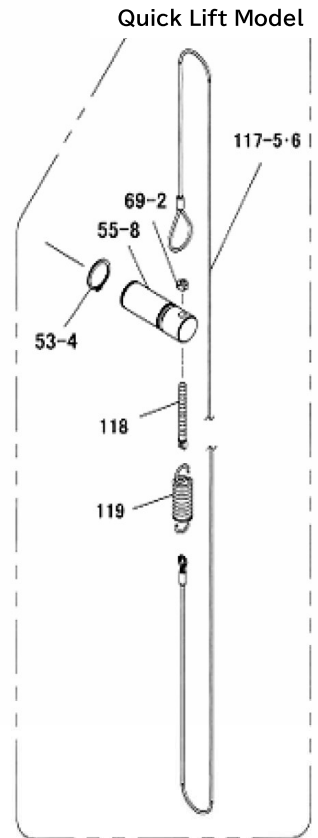
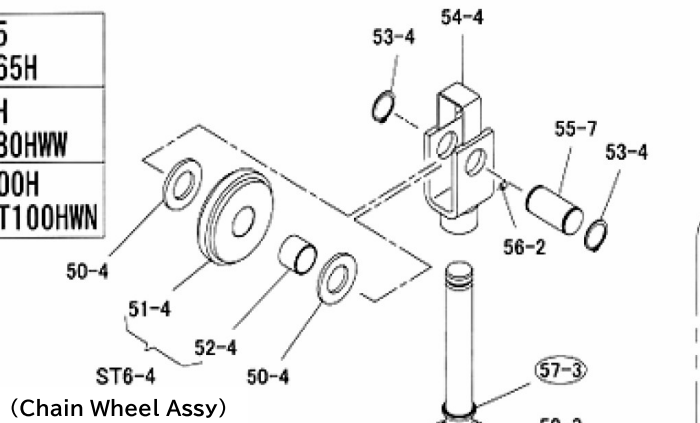
Manual Model (650kg·800kg·1000kg.)

Ill. No.	Parts No.	Parts Name	Standard	Note & Change Date Info.	Qty/Unit			Price/ea.
					650kg	800kg	1000kg	
Note 1 - Quick lift Model shows * marking in front of Qty/Unit Note 2 - Cylinder Assy (ST4-11~ST4-14) is New and Old Compatible for any year production with current Cylinder Assy								
ST4-11	76009360	Cylinder Assy	(57-3~59-3 · 60-7 · 61-3~65-3 · 66 · 67 · 71~74 · 75X3 · 76 · 77-2 · 78 · 79 · 80-2~82-2 · 83 · 84-2 · 85-2 · 87-4 · 88X2 · 89 · 90X2 · 91-3 · 92~97 · 100-2 · 104X3 · 105 · 106-3 · 107-2 · 108~116)	STL65	1			
ST4-12	76009610	Cylinder Assy	(57-3~59-3 · 60-8 · 61-3~65-3 · 66 · 67 · 71~74 · 75X3 · 76 · 77-2 · 78 · 79 · 80-2~82-2 · 83 · 84-2 · 85-2 · 87-4 · 88X2 · 89 · 90X2 · 91-3 · 92~97 · 100-2 · 104X3 · 105 · 106-3 · 107-2 · 108~116)	ST65·ST80·ST100 ST80WW·ST100WN	1			
ST4-13	76009370	Cylinder Assy	(57-3~59-3 · 60-7 · 61-3~65-3 · 66 · 67 · 71~74 · 75X3 · 76 · 77-2 · 78 · 79 · 80-2~82-2 · 83 · 84-2 · 85-2 · 87-4 · 88X2 · 89 · 90X2 · 91-3 · 92~93 · 94X2 · 95~97 · 100-2 · 104X3 · 105 · 106-3 · 107-2 · 108~116 · 120~123)	STL65H	*1			
ST4-14	76009720	Cylinder Assy	(57-3~59-3 · 60-8 · 61-3~65-3 · 66 · 67 · 71~74 · 75X3 · 76 · 77-2 · 78 · 79 · 80-2~82-2 · 83 · 84-2 · 85-2 · 87-4 · 88X2 · 89 · 90X2 · 91-3 · 92~93 · 94X2 · 95~97 · 100-2 · 104X3 · 105 · 106-3 · 107-2 · 108~116 · 120~123)	ST65H·ST80H· ST100H·ST80HWW· ST100HWN	*1			
LV8-1	76005260	Cylinder Seal Kit	(57-3 · 59-3 · 61-3 · 63-3 · 64-3 · 67 · 84-2 · 85-2 · 90X2 · 94 · 95 · 104X3 · 108 · 113)		1	1	1	
LV8-2	76009700	Cylinder Seal Kit	(57-3 · 59-3 · 61-3 · 63-3 · 64-3 · 67 · 84-2 · 85-2 · 90X2 · 94X2 · 95 · 104X3 · 108 · 113 · 121)		*1			
ST6-4-1	76009620	Chain Wheel Assy	(51-4 · 52-4)	Before Mar. 2004	1	1	1	
ST6-4-2	76009621	Chain Wheel Assy	(51-4 · 52-4)	After Apr. 2004	1	1	1	
KG-23	00701600	Lowering Lever Assy	(100-2 · 114 · 115)	After 03120094	1	1	1	
ST13	76005120	Lowering Lever Assy with Bolt	(100-2 · 114 · 116)		1	1	1	
ST38	76009580	Pedal Arm Assy	(71~77-2 · 78 · 79 · 88)		1	1	1	
50-4	90930736	Flat Washer	PW36SE		2	2	2	
51-4-1	12609261	Chain Wheel		Before Mar. 2004	1	1	1	
51-4-2	12609262	Chain Wheel		After Apr. 2004	1	1	1	
52-4	81635030	#80 Bushing	80B-3530 (Oiles)		1	1	1	
53-4	80845022	Snap Ring	RR035		2	2	2	
54-4	02608624	Chain Bracket			1	1	1	
55-7	12609271	Chain Wheel Shaft			1	1	1	
55-8	11132760	Chain Wheel Shaft			*1			
56-2	90960808	Hex Socket Head Screw	HSS0808		1	1	1	
57-3	80803035	Dust Seal	SDR-35 Sakagami		1	1	1	
58-3	12589640	Top Nut			1	1	1	
59-3	80800131	O Ring	G75		1	1	1	
60-7	11136480	Piston Rod		STL65 · STL65H	1			
60-8	12609111	Piston Rod			1	1	1	
61-3	80800019	O Ring	P21		1	1	1	
62-3	12589620	Piston			1	1	1	
63-3	80806034	Back Up Ring	P34-B		1	1	1	
64-3	80800033	O Ring	P34		1	1	1	
65-3	80845015	Snap Ring	RR025		1	1	1	
66	12604330	Air Breather			1	1	1	
67	80800260	O Ring	9.5X3	Qty was changed after 000068	2	→	1	
68-4	12609710	Cylinder Holder			1	1	1	
69-2	90930108	Hex Nut	HNO8SE		2	or	*3	
70-2	90930508	Spring Washer	SWO8SE		2	2	2	
71	90932710	Hex U Nut	HUN10SE		1	1	1	
72	90930710	Flat Washer	PW10SE		1	1	1	
73	02585552	Pedal Bracket			1	1	1	
74	90921050	Hex Socket Head Bolt	HSB1050		1	1	1	
75	80843022	Steel Ball	9/32A		3	3	3	

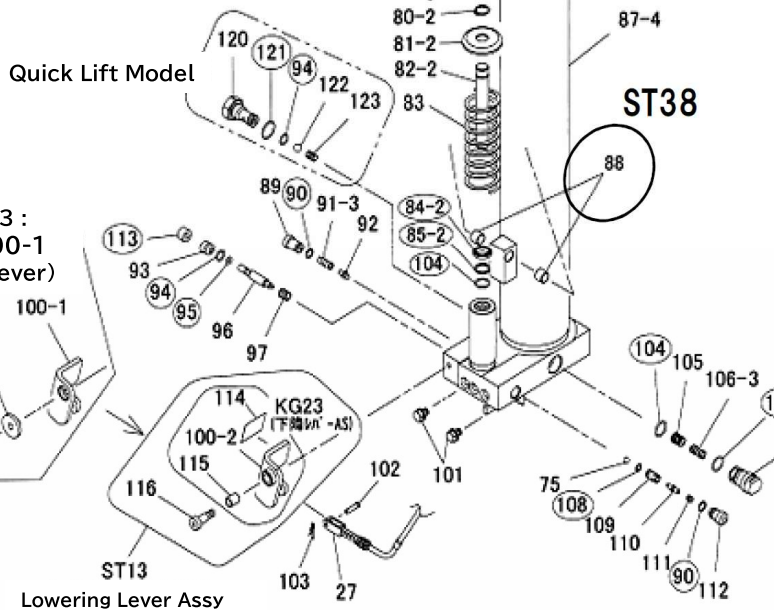
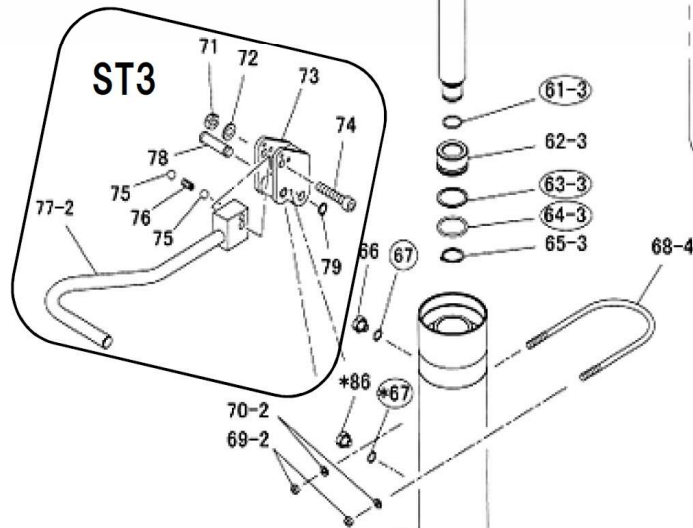
Manual Model (650kg·800kg·1000kg)

Cylinder

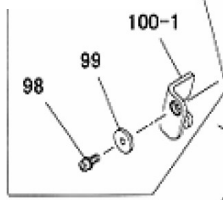
650kg...	ST65·STL65 ST65H·STL65H
800kg...	ST80·ST80H ST80WW·ST80HWW
1000kg...	ST100·ST100H ST100WN·ST100HWN



○ Marking Parts - LV8-1·2 Cylinder Seal Kit



Before
03120093 :
Replace 100-1
(Lowering Lever)



Lowering Lever Assy

Cylinder

Manual Model (650kg·800kg·1000kg.)

Ill. No.	Parts No.	Parts Name	Standard	Note & Change Date Info.	Qty/Unit			Price/ea.
					650kg	800kg	1000kg	
Note 1 - Quick lift Model shows * marking in front of Qty/Unit								
76	52616630	Relief Spring			1	1	1	
77-2	N/A	Pedal Arm		Replace with ST38 (Page 7)	1	1	1	N/A
78	12616801	Piston Head Pin			1	1	1	
79	80845003	Snap Ring	RR012		1	1	1	
80-2	80845007	Snap Ring	RR016		1	1	1	
81-2	12589840	Thrust Washer			1	1	1	
82-2	12589830	Plunger			1	1	1	
83	50705660	Pressure Spring			1	1	1	
84-2	80803016	Dust Seal	SDR-16 Sakagami		1	1	1	
85-2	80806016	Back Up Ring	P16-B		1	1	1	
86	12003533	Plug (Abolished)		Before 000067	1	1	1	
87-4	N/A	Cylinder Weldment (Not available because Cylinder need to be replaced by Assy)			1	1	1	N/A
88	81701212	Dry Bearing	70B-1212 Oiles		2	2	2	
89	12585820	Relief Plug			1	1	1	
90	80800008	O Ring	P10		2	2	2	
91-3	52589600	Relief Spring			1	1	1	
92	12604280	Relief Seat	with SB5/32A		1	1	1	
93	12003503	Steering Bushing			1	1	1	
94	80800010	O Ring	P11		1 or *2			
95	80800002	O Ring	P4		1	1	1	
96	12585651	Pressure Pin			1	1	1	
97	52003463	Back Valve Spring			1	1	1	
98	90760820	Hex Socket Head Cap Bolt	HSBS0820	Before 03120093	1	1	1	
99	12585800	Lowering Lever Holder		Before 03120093	1	1	1	
100-1	N/A	Lowering Lever	Replace with ST13 (Page 7)	Before 03120093	1	1	1	N/A
100-2	02585560	Lowering Lever		After 03120094	1	1	1	
101	90890812	Hex Bolt with Washer	HBS0812SE		2	2	2	
102	50501681	Clevis Pin			1	1	1	
103-1	90972516	Cotter Pin	SP0.2515SE	Before 06090331	1	1	1	
103-2	80654165	Snap Pin (5 Nominal)	Old and New Compatible	After 06090332	1	1	1	
104	80800516	O Ring	P16-1B		3	3	3	
105	12611630	Flow Control Spool			1	1	1	
106-3	52614540	Flow Control Spring			1	1	1	
107	11501320	Flow Control Housing (Plug)	Old and New Compatible		1	1	1	
108	80800005	O Ring	P7		1	1	1	
109	12003483	Valve Seat			1	1	1	
110	12003473	Lowering Valve			1	1	1	
111	52003493	Valve Spring			1	1	1	
112	12611590	Back Valve Screw			1	1	1	
113	52003513	Sealed Rubber		After 03120094	1	1	1	
114	12585920	Lowering Lever Caution Seal		After 03120094	1	1	1	
115	81771015	Dry Bearing LF Bushing	LFB-1015	After 03120094	1	1	1	
116	90730450	Hex Socket Head Cap Bolt	10 x 16 (M8)	After 03120094	1	1	1	
117-5	11137020	Wire Rope (Cable)	L=3375 (overall Length)	STL65H	*1			
117-6	11132780	Wire Rope (Cable)	L=3975 (overall Length)	ST65H - ST80H - ST100H - ST80HWW - ST100HWN	*1			
118	12604560	Wire Adjuster			*1			
119	52603930	Adjuster Spring			*1			
120	11129720	Valve Plug			*1			
121	80800018	O Ring	P20		*1			
122	80843030	Steel Ball	3/8A		*1			
123	52603810	Quick Valve Spring			*1			

Bishamon



Sugiyasu Corporation

3-21, 4-Chome, Hongo-Cho, Takahama City,
Aichi, Japan 444-1394

Tel. 81-566-53-1126, Fax. 81-566-53-1844
<http://www.bishamon.co.jp/>